



INDOFINE Chemical Company, Inc.

121 Stryker Lane, Bldg. 30, Suite 1 • Hillsborough, NJ 08844 • U.S.A.

Phone: (908) 359-6778 • FAX: (908) 359-1179

website: www.indofinechemical.com

e-mail: chemical@indofinechemical.com

CERTIFICATE OF ANALYSIS

Cat No.: 25-016

Product: **2,4-DICHLORO-6,7-DIMETHOXYQUINAZOLINE**

CAS Number: [27631-29-4]

Lot Number: 1212261

Chemical Formula: C₁₀H₈Cl₂N₂O₂

Molecular Weight: 259.09

Melting Point: 173-175°C

Appearance: White fluffy powder

Solubility: Soluble in chloroform

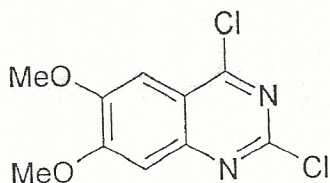
TLC: Hexane:Ethyl acetate (1:1)

Moisture(KF): 0.35%

Storage: Cool dry place

NMR Spectrum: Enclosed

Purity(HPLC): 99.61%





INDOFINE Chemical Company, Inc.

121 Stryker Lane, Bldg. 30, Suite 1 • Hillsborough, NJ 08844 • U.S.A.

Phone: (908) 359-6778 • FAX: (908) 359-1179

website: www.indofinechemical.com

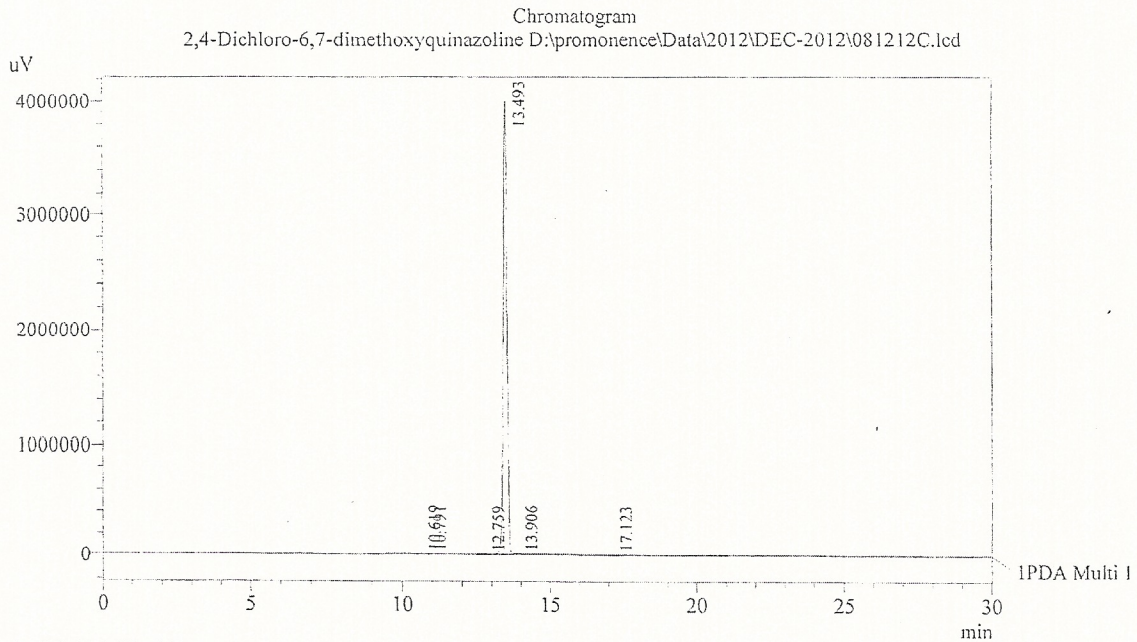
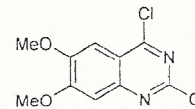
e-mail: chemical@indofinechemical.com

HPLC ANALYSIS

Acquired by : Sanjeev
Sample Name : 2,4-Dichloro-6,7-dimethoxyquinazoline
Sample ID : 500 gms Lot
Injection Volume : 20 uL
Data Filename : 081212C.lcd
Method Filename : Linear Gradient M.lcm

Catalog no.: 25-016
Product name: 2,4-Dichloro-6,7-dimethoxyquinazoline
Lot No.: 1212261

Column : Inertsil ODS C-18, (150mm x4.6mm 5.0µ)
Flow : 1.000 mL/min.
Mobile Phase : A(Water) B(Acetonitrile)
0.01 90 10
12.0 10 90
20.0 10 90
23.0 90 10
30.0 90 10



1 PDA Multi 1 / 254nm 4nm

PeakTable

PDA Ch1 254nm 4nm

| Peak# | Name | Ret. Time | Area | Area % | Relative Retention Time |
|-------|----------------------------|-----------|----------|--------|-------------------------|
| 1 | RT:10.619 | 10.619 | 31905 | 0.09 | 0.79 |
| 2 | RT:10.791 | 10.791 | 10243 | 0.03 | 0.80 |
| 3 | RT:12.759 | 12.759 | 16442 | 0.05 | 0.95 |
| 4 | 2,4-Dichloro-6,7-dimethoxy | 13.493 | 35782516 | 99.61 | 1.00 |
| 5 | RT:13.906 | 13.906 | 57717 | 0.16 | 1.03 |
| 6 | RT:17.123 | 17.123 | 23821 | 0.07 | 1.27 |
| Total | | | 35922644 | 100.00 | |



INDOFINE Chemical Company, Inc.

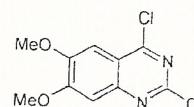
121 Stryker Lane, Bldg. 30, Suite 1 • Hillsborough, NJ 08844 • U.S.A.

Phone: (908) 359-6778 • FAX: (908) 359-1179

website: www.indofinechemical.com

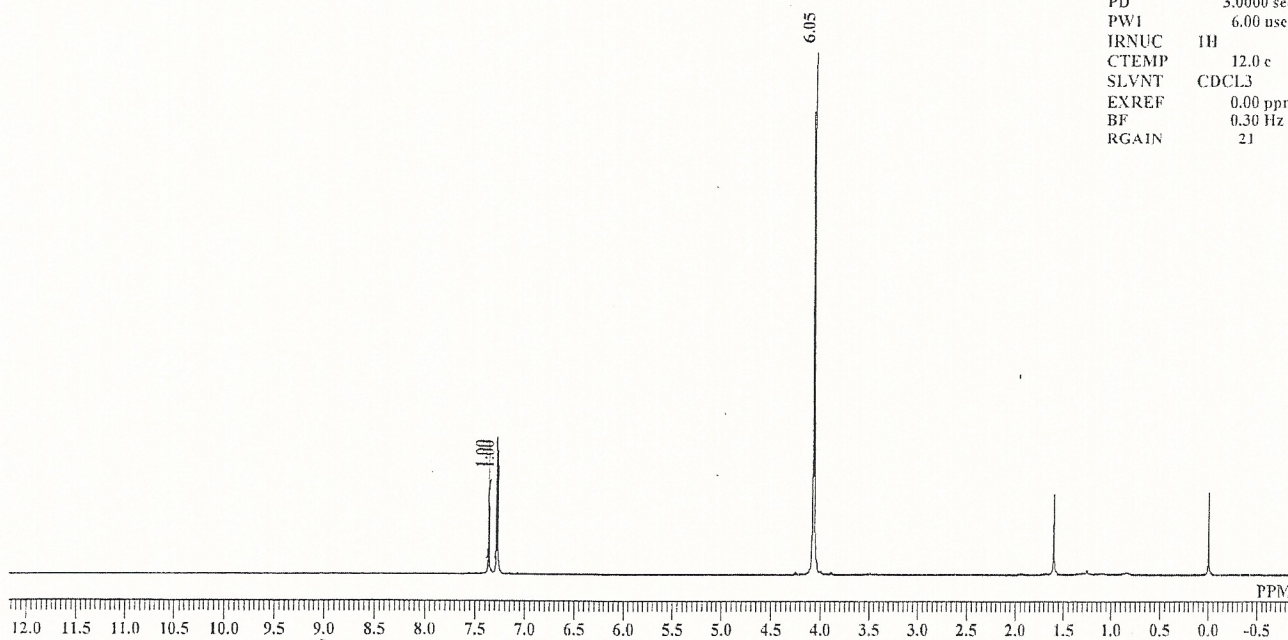
e-mail: chemical@indofinechemical.com

Catalog no.: 25-016
Product name: 2,4-Dichloro-6,7-dimethoxyquinazoline
Lot No.: 1212261



6,7 DMQ #500gms Lot 1H NMR CDCl3
Analysed By : JNR

DFILE 6,7 DMQ #500gms Lot 1H.nls
COMNT 6,7 DMQ #500gms Lot 1H NMR
DATIM Sat Dec 08 16:42:29 2012
OBNUC 1H
EXMOD NON
OBFRQ 399.65 MHz
OBSET 124.00 KHz
OBFIN 10500.00 Hz
POINT 65536
FREQU 7992.01 Hz
SCANS 16
ACQTM 8.2002 sec
PD 3.0000 sec
PW1 6.00 usec
IRNUC 1H
CTEMP 12.0 c
SLVNT CDCL3
EXREF 0.00 ppm
BF 0.30 Hz
RGA1N 21



ICG **INDOFINE Chemical Company, Inc.**

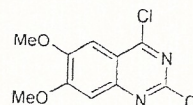
121 Stryker Lane, Bldg. 30, Suite 1 • Hillsborough, NJ 08844 • U.S.A.

Phone: (908) 359-6778 • FAX: (908) 359-1179

website: www.indofinechemical.com

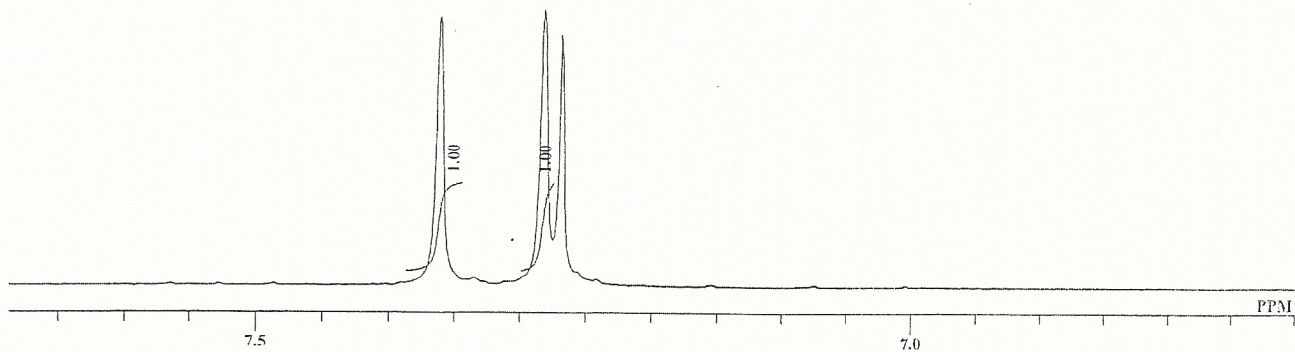
e-mail: chemical@indofinechemical.com

Catalog no.: 25-016
Product name: 2,4-Dichloro-6,7-dimethoxyquinazoline
Lot No.: 1212261



6,7 DMQ #500gms Lot 1H NMR CDCl3
Analysed By : JNR

| | |
|-------|----------------------------|
| DFILE | 6,7 DMQ #500gms Lot 1H.als |
| COMNT | 6,7 DMQ #500gms Lot 1H NMR |
| DATIM | Sat Dec 08 16:42:29 2012 |
| OBNUC | 1H |
| EXMOD | NON |
| OBFRQ | 399.65 MHz |
| OBSET | 124.00 KHz |
| OBFIN | 10500.00 Hz |
| POINT | 65536 |
| FREQU | 7992.01 Hz |
| SCANS | 16 |
| ACQTM | 8.2002 sec |
| PD | 3.0000 sec |
| PW1 | 6.00 usec |
| IRNUC | 1H |
| CTEMP | 12.0 c |
| SLVNT | CDCl3 |
| EXREF | 0.00 ppm |
| BF | 0.30 Hz |
| RGAIN | 21 |





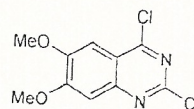
INDOFINE Chemical Company, Inc.

121 Stryker Lane, Bldg. 30, Suite 1 • Hillsborough, NJ 08844 • U.S.A.

Phone: (908) 359-6778 • FAX: (908) 359-1179

website: www.indofinechemical.com

e-mail: chemical@indofinechemical.com



Catalog no.: 25-016
Product name: 2,4-Dichloro-6,7-dimethoxyquinazoline
Lot No.: 1212261

6,7 DMQ #500gms Lot 1H NMR CDCl3
Analysed By: JNR

| | |
|-------|----------------------------|
| DFILE | 6,7 DMQ #500gms Lot 1H.als |
| COMNT | 6,7 DMQ #500gms Lot 1H NMR |
| DATIM | Sat Dec 08 16:42:29 2012 |
| OBNUC | 1H |
| EXMOD | NON |
| OBFRQ | 399.65 MHz |
| OBSET | 124.00 KHz |
| OBFIN | 10500.00 Hz |
| POINT | 65536 |
| FREQU | 7992.01 Hz |
| SCANS | 16 |
| ACQTM | 8.2002 sec |
| PD | 3.0000 sec |
| PW1 | 6.00 usec |
| IRNUC | 1H |
| CTEMP | 12.0 c |
| SLVNT | CDCl3 |
| EXREF | 0.00 ppm |
| BF | 0.30 Hz |
| RGAIN | 21 |

